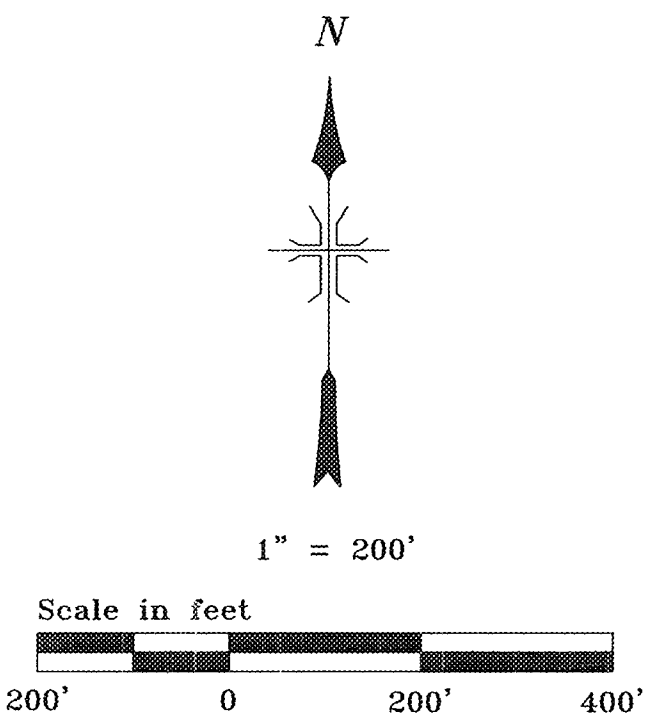
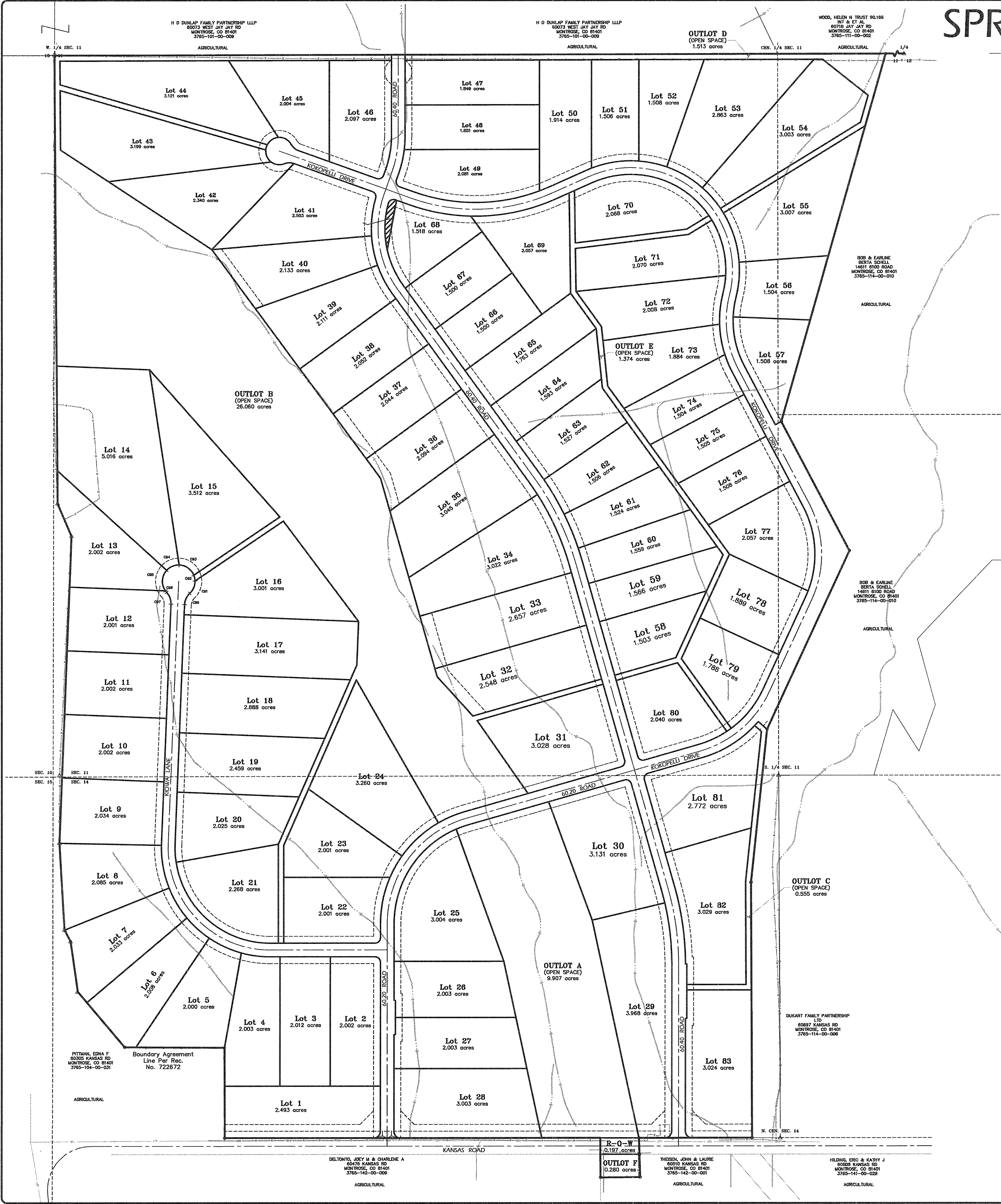



# SPRING CREEK MEADOWS SUBDIVISION

SEC. 11 & 14 T.49N., R.10W., N.M.P.M.  
MONTROSE COUNTY, COLORADO



 <b>DEL-MONT CONSULTANTS, INC.</b> ENGINEERING & SURVEYING <small>125 Colorado Ave. • Montrose, CO 81401 • (970) 249-2531 • (970) 249-2542 fax          www.del-mont.com • service@del-mont.com</small>		SUBDIVISION: <b>SPRING CREEK MEADOWS SUBDIVISION</b>	
SHEET: <b>5 OF 5</b>		CLIENT: <b>KANSAS ROAD PARTNERS, LLC</b>	
DRAWN BY: <b>PCH / RWG</b>		ADDRESS & PHONE: <b>P.O. BOX 679          RIDGWAY, CO 81432          970-626-4125</b>	
DATE: <b>01.24.06</b>		TYPE: <b>PRELIMINARY PLAT</b>	
FILE: <b>0514-pre-maj</b>		JOB NO.: <b>0514</b>	